

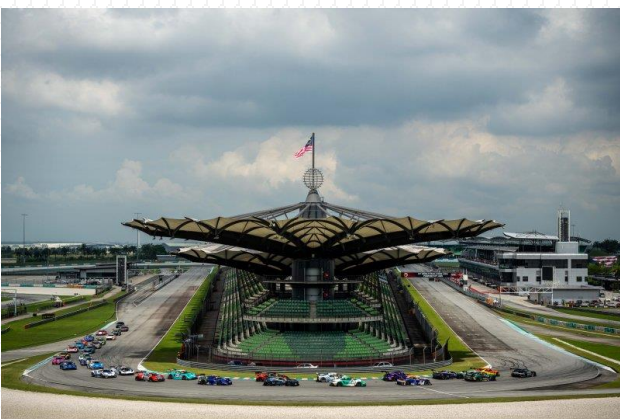
DIXCEL NEWS

2025-03&04

Change your BRAKES



GT World Challenge Asia is Underway!



On April 11th in Sepang, Malaysia, the 2025 season of the GT World Challenge Asia officially kicked off. Since the series began in 2017, DIXCEL has been an official partner of the race.

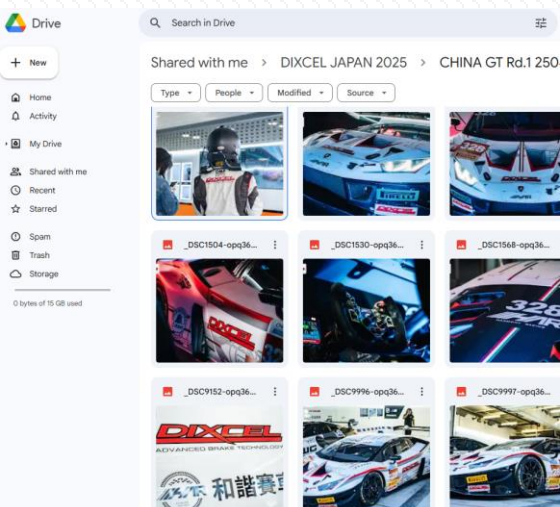
China Suzhou GT SHOW 2025



From March 28th to 30th, China Suzhou GT SHOW 2025 was held. DIXCEL subsidiary company hold a booth. Over 200,000 guest visited the event.



Marketing Materials (Google Drive)



We have created a Google Drive folder for sharing marketing materials such as photos and videos for each distributor's social media use.

If you are interested in accessing the materials, please create a Google account (if you don't have one already) and share your email address with us at following email address.

Brake Tutorial Course



Materials : Non asbestos organic
Temperature Range : 0~600℃

M type(Ultra low dust)

The M type is **the second best-selling** brake pad in the overseas market. It is especially popular among European car owners due to its **low dust** performance. When selling the M type, it's important to inform users about its braking characteristics. **The M type provides a progressive (build-up) stopping feel.** If users are unaware of this, they may mistakenly think it has low friction performance.

NEW TO RANGES

【PAD】

MODEL	GRADE	Year/ Month	Vehicle Code	Remarks	Part Number		
MITSUBISHI							
MINICAB ミニキャブ	660	14/02～17/11	DS16T		F	371 082	
					R	375 9932	
	660	17/12～			F	371 082	
					R	375 8032	
MAZDA							
SCRUM スクラム	660	02/05～05/09	DG63T	重台№→380000 TRUCK DUMP	F	371 054	
					R	375 9932	
		05/09～		重台№380001→ TRUCK DUMP	F	375 1048	
					R	371 082	
			F	375 9932			
			R	375 1048			
SUZUKI							
CARRY / EVERY キャリィ / エブリィ	660	02/05～05/09	DA63T	重台№→380000	F	371 054	
					R	375 9932	
		05/09～			重台№380001→	F	371 082
						R	375 9932
	660	05/08～	DA65T		F	371 082	
					R	375 9932	
	660	13/09～	DA16T		F	371 082	
					R	375 9932	
AUDI							
RS7 SPORTBACK	4.0 QUATTRO	21/01～	F2DJPS/F2DJPA		F	131 5888	
					R	135 5998	

NEW TO RANGES

【DISC】

MODEL	GRADE	Year/ Month	Vehicle Code	Remarks	Part Number	
BENTLEY						
CONTINENTAL	GT 6.0 TURBO	03～11	BCBEB BCBWR	車台№→3W_5_029254	F	131 8341
				Not applicable to PCCB	R	135 4966
BMW						
G26 (Gran Coupe)	420i M SPORTS	21/11～	12AV20	Option [Fast Track Package] [Fr:348mm Rr:345mm DISC]	F	121 8451
						120 8451
					R	125 7872
U11 X1	M35i xDrive	23/02～	12EF20		F	121 8723
					R	125 7790
CITROEN						
C5 X	1.6 TURBO	22/10～	E435G06		F	211 8455
					R	235 7964
XM (Y3)	3.0 V6 24V	98/1～02/03	Y4XF		F	231 8219
					R	235 0332
MERCEDES BENZ						
W206 (SEDAN)	C200	21/07～	206042C		F	110 8737
					R	118 7660
				AMG LINE	F	112 8735
					R	118 7660