



TOYOTA LAND CRUISER 300 Brake pads/discs in stock now

Long-awaited products for LC300 (Toyota Land Cruiser 300) are now in stock.

Brake pad No. Front 311780 / Rear 315786

Brake disc No. Front 3119449 / Rear 3159216



GT Show China 2024 DIXCEL Booth

GT Show is a China's premier automotive specialty products trade fair and a MUST-GO event for car fans.

Our local sales office in Shanghai (DIXCEL China) ran a nice and stylish booth.

The Chinese market is known for its competitiveness and innovative characteristics and DIXCEL has been a well-established and reliable brand for over decades in China.

誰でも分かるブレーキ講座 Brake tutorial course

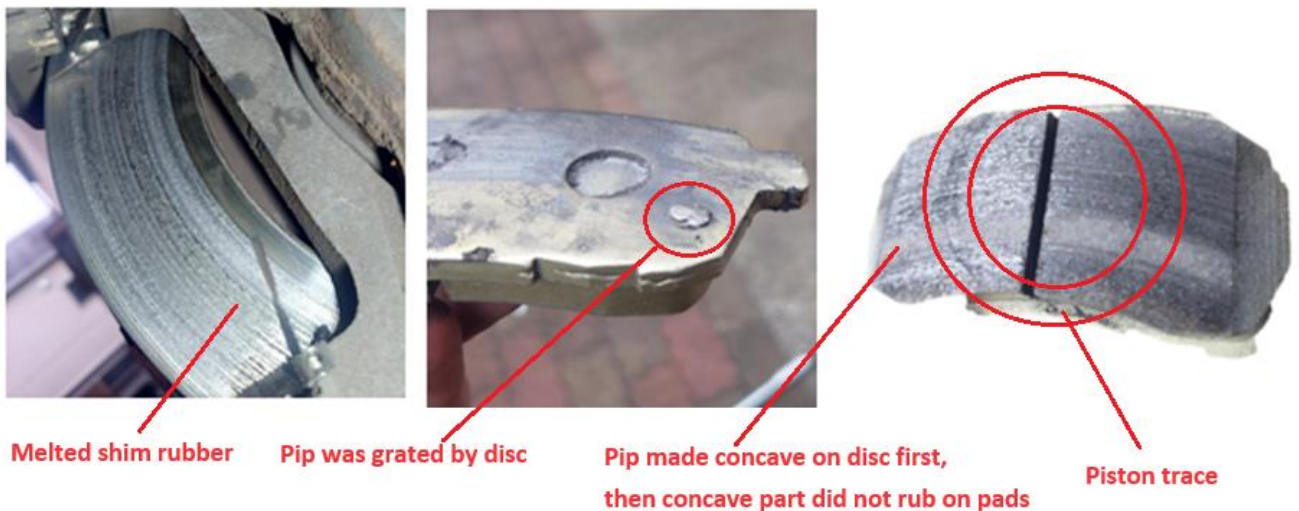


DIXCEL Brake tutorial course, Vol.2.5 is about a rare incident due to mis installation.



Case Study: An end-user complained a pad destroyed the disc surface within 1000km. The shim of the inner pad is gone. Pips/lugs on backing plates are squashed.

Answer: DIY installer fit the Backing plate side to rub on the brake disc. Later on, he found out his mistake and re-fit the pad. The disc surface was too destroyed to recover.



NEW TO RANGES.

We are proud to announce new to ranges.

[>>See archives](#)

PAD							
MODEL	Grade グレード	Year/Month 年式(西暦)	Vehicle Code 型式	Remarks 備考	F / R	Part Number 品番	
TOYOTA							
SIENTA シェンタ	1500~1500+M	22/08~	MXPC10G MXPL10G		F	311 728	
			MXPL15G		R	315 543	
LEXUS							
RX350	2400	22/11~	TALA10		F	311 579	
					R	315 736	
	2400	22/11~	TALA15	Version L	F	311 579	
					R	315 736	
RX350h	2500+M	22/11~	AALH10 AALH15		F	311 579	
					R	315 736	
RX450h+	2500+M	22/11~	AALH16		F	311 579	
					R	315 736	
NISSAN							
AURA オーラ	1200+M	21/08~	FE13		F	321 722	
					R	DRUM	
	1200+M	21/08~	FSNE13		F	321 722	
					R	DRUM	
AUDI							
S6	2.9 QUATTRO	20/09~	F2DKML		F	131 5908	
					R	135 6267	
MODEL	Grade グレード	Year/Month 年式(西暦)	Vehicle Code 型式	Remarks 備考	F / R	Part Number 品番	
BMW							
U06	218i Active Tourer	22/06~	62BX15		F	121 6695	
					R	125 6687	
	218d Active Tourer	22/06~	22BY20		F	121 6695	
					R	125 6687	
U11 X1	xDrive 20i	23/02~	52EE20		F	121 6695	
					R	125 6687	
	iXi xDrive30	23/02~	62EF67		F	121 7151	
					R	125 6687	
G05 X5	xDrive 35d M SPORTS	23/08~	12EV30A		F	121 2426	
					R	125 4703	
	xDrive 40d M SPORTS	22/02~	JU8230S/JU8230A		F	121 2426	
					R	125 4703	
	xDrive 50e M SPORTS	23/04~	42EU30		F	121 2392	
					R	125 4703	
	M60i xDrive	23/04~	32EU44A		F	121 2392	
					R	125 4703	
MERCEDES BENZ							
W167/C167	GLE300d 4MATIC	19/06~21/12	167119C		F	111 2944	
					R	115 6216	
				option AMG LINE	F	111 2962	
					R	115 2723	
X167	AMG GLS63 4MATIC+	20/12~	167989	※7 ショーンカーがインストール・アプリーション不可 Not applicable to PCCB	F	111 2697	
					R	115 2717	

DISC							
MODEL	Grade グレード	Year/Month 年式(西暦)	Vehicle Code 型式	Remarks 備考		F / R	Part Number 品番
LEXUS							
NX250		21/11~	AAZA20 AAZA25			F	311 9389
						R	315 9208
NX350 / NX350h		21/11~	AAZH20 AAZH25 TAZA25	F SPORT 含む		F	311 9389
						R	315 9208
NX450h		21/11~	AAZH26	F SPORT 含む		F	311 9443
						R	315 9208
BMW							
G05 X5	xDrive 35d M SPORTS	23/08~	12EV30A			F	120 8451
						R	125 7872
	xDrive 40d M SPORTS	22/02~	JU8230S/JU8230A			F	120 8451
						R	125 7872
	M60i xDrive	23/04~	32EU44A			F	121 8595
						R	125 7766